

## **CERTIFICATE**

This is to certify that the Estimate for Construction of Warehouse Building for **Asgaonkar Agro Farmers Producer Co. Ltd.**, on **Gat No. 333/2, Mouza- Virali (khandar), Tah.- Pauni, Distt.- Bhandara.**

The total estimated cost of the above said Construction Works of Warehouse Building is worth to **Rs. 11809256.00/- (Rs. One Crore Eighteen Lacs Nine Thousands Two Hundred Fifty Six Only).**

The above Estimated rates are as per PWD CSR 2020-21 & as per market rates.

The detailed Estimate is attached separately.

Date:-

Place:-

**Name Of Work :-** Proposed Estimate for Construction of Warehouse Building for  
 Asgaonkar Agro Farmers Producer Co.Ltd. Asgaon, on Gat No.333/2,  
 Mouza- Virali (khandar), Tah.- Pauni, Distt.- Bhandara.

**ESTIMATE**

<b>Sr. No.</b>	<b>Description</b>	<b>Quantity</b>	<b>Unit</b>	<b>Rate</b>	<b>Amount</b>
1	<b>Excavation</b> for foundation in earth, soils of all types, sand, gravel and soft murum, including removing the excavated material upto a distance of 50 m. beyond the building area and stacking or spreading as directed, preparing the bed for the foundation and necessary back filling, with approved material ramming, watering, including shoring and strutting as necessary complete. <b>Spec.No. :Bd.A.1/Page No.259</b>	141.55	Cu.m.	306.0	43314.30
2	<b>Filling</b> in Foundation & plinth with contractors approved material / murum / stone dust in 15 cm. to 20 cm. layers including watering and compaction complete.(Including Royalty) <b>Spec. No. : Bd.A. 11/Page No. 263</b>	462.77	Cu.m.	446.0	206396.31
3	Providing and laying in situ, <b>P.C.C. in 1:4:8</b> of trap/ granite/ quartzite/ gneiss metal for <b>foundation and bedding</b> including bailing out water, plywood/ steel formwork, compacting, finishing uneven and honey combed surface curing etc. complete. <b>Spec. No. : Bd.E. 1/Page No. 287/I.S. 456 (2000)</b>	9.437	Cu.m.	5449.0	51422.21
4	Providing and laying in situ cement concrete of M-20 grade of trap / granite/ quartzite / gneiss metal for <b>R.C.C. work in footings</b> of R.C.C. columns including bailing out water, plywood/steel formwork, compaction, curing and roughening the surface, finishing uneven and honeycombed surface with C.M. 1:3 of sufficient minimum thickness to give smooth and even surface etc. complete. <b>Spec.No.: Bd.F.3/Page No.298/I.S. 456 (2000).</b>	28.31	Cu.m.	6300.0	178353.00

5	<p>Providing and casting in situ cement concrete of M-20 grade of trap / granite /quartzite/ gneiss metal for <b>R.C.C. columns</b> as per detailed design and drawings or as directed, including steel centering, plywood/steel formwork, compaction, finishing uneven and honeycombed surface with C.M. 1:3 to give a smooth and even surface or roughening the surface if special finish is to be provided and curing etc. complete. <b>spec.No.: Bd.F.5/Page No. 300/I.S. 456(2000)</b></p>	29.442	Cu.m.	11200.0	329750.40
6	<p>Providing and casting in situ cement concrete of M-20 grade of trap / granite /quartzite /gneiss metal for <b>R.C.C. beams and lintels</b> as per detailed design and drawings or as directed,including steel centering, plywood/steel formwork steel props, compaction, finishing uneven and honeycombed surface with C.M.1:3 of sufficient minimum thickness to give a smooth and even surface or roughening if special finish is to be provided and curing etc. complete. <b>Spec.No.: Bd.F.6/Page No.300/I.S. 456 (2000)</b></p>	53.644	Cu.m.	10250.0	549851.00
7	<p>Providing and laying Cast in situ/ Ready Mix cement concrete M-20 of trap /granite /quartzite /gneiss metal for <b>R.C.C. slab for Flooring</b> as per detailed designs and drawings including steel centering, formwork, coverblocks, laying /pumping, compaction finishing the formed surfaces with cement mortar 1:3 of sufficient minimum thickness to give as mooth and even surface or roughening if special finishis to be provided and curing etc. complete. <b>Spec.No.: Bd.E.2 Page Number 288 and B.7 Page No 38</b></p>	69.907	Cu.m.	6180.0	432025.26
8	<p>Providing and fixing in position <b>Mild Steel reinforcement</b> of various diameters for R.C.C. footings, beams and columns, lintels, etc. as per detailed design and drawings and schedules including cutting, bending, hooking the bars, binding with wires or tack welding and supporting as required completed. <b>Spec.No.: Bd.F.17/Page No.306</b></p>	14.60	MT	62500.0	912500.00

9	Providing <b>second class Burnt Brick masonry</b> with conventional/ I.S. type bricks in cement mortar 1:6 in <b>super structure</b> including striking joints, racking out joints watering and scaffolding complete. <b>Spec.No.: Bd.G.5/Page No.315</b>	144.035	Cu.M.	6500.0	936227.50
10	Providing <b>internal cement plaster 12 mm thick</b> in CM 1:4 in a single coat to concrete or brick surface in all positions including scaffolding and curing, providing groove at joint of B.B. Masonry and concrete members complete. <b>Spec.No.: Bd.L.2/Page No.368</b>	555.600	Sq.m.	264.0	146678.40
11	Providing <b>External cement plaster 20 mm thick</b> in CM 1:4 in a single coat to concrete or brick surface in all positions including scaffolding and curing, providing groove at joint of B.B. Masonry and concrete members complete. <b>Spec.No.: Bd.L.2/Page No.368</b>	662.490	Sq.m.	374.0	247771.26
12	Providing and fixing <b>rolling steel shutters</b> fabricated from 20 guage steel laths with slide guides, bottom rail, brackets, door suspension shaft including rolling springs, locking arrangement and housing box at top including one coat of red lead primer etc. complete. <b>Spec.No.: Bd.T.55/Page No.510.</b>	21.000	Sq.m.	3080.0	64680.00
13	Providing and fixing <b>steel ventilator</b> fully glazed partly fixed as per detailed drawing without hot dip zinc coating including fabricating glazing with plain /obscured glass panes 5mm thick and approved type and quality and iron oxidized fixtures and fastening oil paint 2 coats etc. complete. <b>Spec.No.: BD-T-53 Page Number 509 As directed by Engineer incharge</b>	28.560	Sq.m.	2200.0	62832.00
14	Providing <b>structural steel work</b> in trusses, other similar trussed purlins and members with all bracing, gusset plates etc. as per detailed design and drawings or as directed including cutting, fabricating, hoisting, erecting fixing in position, making riveted /bolted/welded connection and one coat of anticorrosive paint and over it two coats of oil painting of approved quality and shade complete. <b>Spec. No. : Bd.C. 8/Page No. 278.</b>	35.65	MT	85000.0	3030250.00

15	Providing and fixing corrugated <b>galvanised iron sheets</b> of 0.63 mm thick (24 B.W.G.) for roofing without wind tiles including fastening with galvanised iron screws and bolts, lead and bitumen washers as per drawing etc. complete. (Weight of 5.5 Kilogram /sq.m.). <b>Spec.No.: Bd.R.5, Page Number 453.</b>	824.20	Sq.m.	745.0	614029.00
<b>TOTAL</b>					<b>7806080.65</b>
<b>SAY</b>					<b>7806080.00</b>

**(Rs. Seventy Eight Lacs Six Thousands Eighty Only.)**

**Name Of Work :-** Proposed Estimate for Electrical Works for Asgaonkar  
Agro Farmers Producer Co.Ltd. Asgaon, on Gat No.333/2,  
Mouza- Virali (khandar), Tah.- Pauni, Distt.- Bhandara.

**ESTIMATE**

<b>Sr.</b>	<b>Description</b>	<b>Quantity</b>	<b>Unit</b>	<b>Rate</b>	<b>Amount</b>
1	Supplying, erecting & terminating <b>XLPE armoured cable</b> 3 core 6 sq. mm. copper conductor continuous 5.48 sq. mm. (12 SWG) G.I. earth wire complete erected with glands & lugs, on wall/ trusses/ pole or laid in provided trench/ pipe as per specification no. CB-LT/CU	25.00	RMT	290.00	7250.00
2	Making <b>trench</b> of suitable width and depth in hard murum / tar road for laying provided LT cable up to and including 16 sq. mm complete as per specification no. CW-EXNCTR	12.00	RMT	205.00	2460.00
3	Making <b>trench</b> of suitable width and depth in soft soil for laying provided LT cable up to and including 16 sq.mm complete as per specification no. CW-EXNCTR	12.00	RMT	175.00	2100.00
4	Supplying & erecting mains <b>PVC unarmoured cable</b> 1100 Volt grade ISI mark 3 core / 2.5 sqmm stranded / solid copper complete erected on wall with duly painted G. I. Saddle @	100.00	RMT	135.00	13500.00
5	Supplying & erecting weatherproof powder coated <b>distribution board 4 way</b> with 2 x 6/10 Amp S. P. M. C. B. with industrial two pin plug socket 10 A and 3 pin plug top 10 A with top cover necessary connection etc complete with approved make.	10.00	Nos.	1310.00	13100.00
6	Providing <b>point wiring for street light</b> with PVC unarmoured cable 1100Volt grade ISI mark 3 core 1.5 sqmm stranded / solid copper erected on wall with G. I. Saddle duly painted @ 0,25 m C/C rigidly grouted in the wall with the help of plated screw including 4" x 4" M. S. box 2 way with epoxy painting.	6.00	Nos.	1225.00	7350.00
7	Supplying & erecting 10-12W, 230V integral type <b>LED Lamp</b> suitable for B-22/E-27 base.	4.00	Nos.	230.00	920.00

8	Supplying and erecting <b>LED street light</b> fitting suitable for 20 to 25W, with PF > 0.95 class IP 65 and above housing of pressure die cast aluminium alloy and heat sink extruded aluminium complete as per specification No FG-ODF/FLS	4.00	Nos.	2015.00	8060.00
9	Supplying and erecting <b>street light Wall bracket</b> made from 40 mm. dia 'B' class G.I. pipe 1.2 m in total length complete as per specification no. FG-BKT/WB	4.00	Nos.	715.00	2860.00
10	Providing earthing with <b>galvanized iron earth plate</b> size 60 x 60 x 0.6 cm complete with all materials, testing & recording the results as per specification no. EA-EP	1.00	Nos.	4350.00	4350.00
11	Providing pipe type <b>earthing</b> with 40mm. dia. G.I. pipe or 20 mm dia. G.I. Rod complete with all materials as per specification no. EA-EP	1.00	Nos.	1450.00	1450.00
12	Supplying, erecting & marking <b>DPMCB</b> 6A to 32A, C- series (for motor/power) in provided distribution board as per specification no. SW-SWR/MCB	1.00	Nos.	495.00	495.00
13	Supplying, erecting & marking <b>SPMCB</b> 6A to 32A, B- series (for lighting) in provided distribution board as per specification no. SW-SWR/MCB	1.00	Nos.	165.00	165.00
14	Supplying and erecting <b>GI sheet</b> 1.6 mm (16 SWG) to be used for fabrication of boxes panel boards etc. including cutting, bending, drilling, welding, riveting etc. and painting with one coat of red lead paint and 2 coats of enamel paint.	1.00	Sqm	2270.00	2270.00
15	Supplying and erecting marine plywood 18/19 mm thick fixed to wall or on provided panel board with necessary materials such as screws, wall fasteners, supports, nut bolts etc. complete.	1.00	Sqm	1345.00	1345.00

16	Supplying and erecting <b>triple pole and neutral distribution board</b> (TPNDB) surface/ flush mounted suitable for SPMCB of 12 ways on iron / GI frame (horizontal busbar type) as per specification no. SW-SWR/MCBDB	2.00	Nos.	4735.00	9470.00
17	Supplying & erecting <b>G.I. pipe</b> 'A' class 25 mm dia. erected for enclosing XLPE armoured cable on wall/pole as per specification no. CB-CE	10.00	RMT	198.00	1980.00
18	Supplying & erecting <b>G.I. pipe</b> 'A' class 40 mm dia. erected for enclosing XLPE armoured cable on wall/pole as per specification no. CB-CE	10.00	RMT	305.00	3050.00
19	Supplying and laying (including excavation of suitable width & depth up to 90 cm) 75 mm outside dia. <b>double wall corrugated pipes</b> (DWC) of HDPE for enclosing cable below ground/road surface, to required depth complete.	12.00	RMT	230.00	2760.00
20	Supplying & erecting 18 gauge <b>M.S. Box powder</b> coated (4"x4") 3 way for mains connection.	2.00	Nos.	85.00	170.00
21	Supplying & erecting <b>Siemens type brass cable</b> glands for 3 to 4 core 6 sq. mm. /2 to 4 core 10 sq. mm. for XLPE armoured cable as per specification No. CB-GL	4.00	Nos.	60.00	240.00
22	Supplying shockproof type <b>hand lamp</b> with lamp holder, bulb/ lamp 100 W guarded glass and 30 mtr. 3 core PVC flexible	1.00	Nos.	1575.00	1575.00
23	Point wiring for <b>independent plug</b> in 20 mm ISI marked HMS PVC conduit with 1.5 sq.mm (2+1E) FRLSH grade copper wire, flush type switch, earthing and required accessories as per specification No: WG-PW/SW	2.00	Nos.	496.00	992.00
24	Supplying and erecting <b>Street light bracket</b> made from 25 mm. dia 'B' class G.I. Pipe, 0.6 m in length along with pole cap of 300 mm length and 80 mm dia duly welded with provided leads as per specification no. FG-BKT/BPC	1.00	Nos.	466.00	466.00

25	Supplying & erecting mains with 2 x 2.5 Sq.mm stranded copper <b>PVC insulated wire</b> with 2 x 1.5 Sq.mm copper PVC wire in PVC casing - capping 20 mm on wall / ceiling.	2.00	RMT	135.00	270.00
26	Supplying & erecting main with 2 x 4.00 Sq.mm stranded <b>copper PVC insulated wire</b> with 2 x 1.5 Sq.mm copper PVC wire in PVC casing - capping on wall / ceiling.	2.00	RMT	155.00	310.00
27	Supplying and erecting <b>double pole switch</b> surface type/ flush type 240V, 32A with indicator lamp & fuse as per specification no. SW-SWR/BDP.	1.00	Nos.	177.00	177.00
28	Supplying and erecting double pole <b>metal clad switch</b> with HC type fuse and neutral link 240V, 32A on iron / GI frame as per specification no. SW-SWR/MDP ..	4.00	Nos.	785.00	3140.00
29	Supplying & erecting 3W, 230V integral type <b>LED Lamp</b> suitable for B-22/E-27 base.	1.00	Nos.	125.00	125.00
30	Supplying and erecting T8 Fluorescent <b>tube day light</b> 1200 mm 36 W	2.00	Nos.	45.00	90.00
31	Supplying & erecting ready to use <b>Retrofit T8 LED 18 / 20 tube light</b> with polycarbonate body, heat sink, integrated HF electronic driver complete & compatible to T8 / T12 LED luminaire by disconnecting starter & ballast if necessary.	1.00	Nos.	635.00	635.00
32	Supplying and erecting regular/ standard model <b>ceiling fan</b> of 900 /1050 mm. sweep complete erected in position as per specification no. FG-FN/CF	1.00	Sqm	1895.00	1895.00
33	Supplying and fixing <b>wiremesh (Jali) cover</b> suitable for fitting / fan or for any purpose, complete with necessary materials. The jali cover shall be made from good quality G.I. wire mesh	4.00	Nos.	450.00	1800.00

34	Supplying and erecting ding dong / electronic <b>musical type call bell</b> with heavy duty coil suitable to operate on 230V A.C. supply erected on polished double wooden block/sunmica block of suitable size	1.00	Nos.	135.00	135.00
35	Supplying and erecting <b>street light</b> Wall bracket made from 25 mm. dia 'B' class G.I. pipe 1.2 m in total length complete as per specification no. FG-BKT/WB	5.00	Nos.	575.00	2875.00
36	Supplying & erecting <b>CRCA sheet</b> metal one wayenclosures suitable for DP MCB /TP MCB /FP MCB erected on angle iron/GI frame complete.	1.00	Nos.	365.00	365.00
37	Supplying, erecting and marking <b>four pole isolators</b> only switch version of miniature circuit breakers of 40 A in provided distribution board complete.	1.00	Nos.	625.00	625.00
<b>Total</b>					<b>100820.00</b>

**(Rs. One Lacs Eight Hundred Twenty Only)**

**Name Of Work :- Proposed Estimate for Internal Bituminous Roads for Asgaonkar  
Agro Farmers Producer Co.Ltd. Asgaon, on Gat No.333/2,  
Mouza- Virali (khandar), Tah.- Pauni, Distt.- Bhandara.**

**ESTIMATE**

<b>Sr. No.</b>	<b>Description</b>	<b>Quantity</b>	<b>Unit</b>	<b>Rate</b>	<b>Amount</b>
	<b>PART I - INTERNAL ROADS</b>				
1	<b>Excavation for roadway</b> in earth, soil of all sorts, sand, gravel or soft murum including dressing section to the required grade, camber and side slopes and conveying the excavated materials outside the complex including all leads & lifts.	498.6	Cum	121	60330.6
2	Providing <b>soling</b> using 80 mm size trap metal in 15cm. Layer including filling voids with Crushed sand/grit, ramming, watering etc. complete.	191.13	Cum	1388	265288.44
3	Supplying <b>80 mm trap stone metal</b> at the road side including conveying & stacking etc.complete	164.038	Cum	735	120567.93
4	Supplying <b>40 mm trap stone metal</b> at the road side including conveying & stacking etc.complete.	109.692	Cum	820	89947.44
5	<b>Spreading 80 mm</b> trap stone metal including sectioning as directed etc. complete.	164.038	Cum	89	14599.382
6	<b>Spreading 40 mm</b> trape stone metal including sectioning as directed etc. complete.	109.692	Cum	89	9762.588
7	<b>Supplying hard murum</b> / kankar at the road site, including conveying and stacking complete.	70.63	Cum	417	29452.71
8	<b>Spreading hard murum/</b> soft murrum/ gravel or kankar for side width complete	71.63	Cum	78	5587.14
9	<b>Compacting oversize metal</b> layer with H.M.with power roller including artificial watering & necy. Labour etc. complete.	2493	Sqm	30	74790
10	<b>Compacting the hard murum</b> side widths including laying in layers on each side with vibratory roller including artificial watering etc. complete	6.925	Sqm	22	152.35

11	Providing and constructing <b>75mm. thick Modified Penetration Macadam (MPM)</b> road surface including all materials, preparing the existing road surface, spreading 40mm. stone metal layers 100% crusher broken metal with conical crusher plant heating and spraying the bitumen of specified grade @ 2 Kilogram /Square Metre, spreading 12 mm. size chips compacting with three wheel static roller having weight 8 to10MT. to achive the desired degree of compaction as per Technical Specification Clause 506 etc. complete. (VG-30 bulk bitumen )	831	Sqm	235	195285
12	Providing and <b>applying tack coat</b> on the prepared surface heating by fames in Boiler and spraying bitumen setfooted inbitumen boller on B.T. surface 2.5kg /10sqm. (VG-30 bulk bitumen rates are considered to arrive at rates)	831	Sqm	15.45	12838.95
13	<b>Open Graded Premix Surfacing-</b> Providing and Laying OGC 20 mm thickness composed of 13.2 mm to 5.6 mm aggregates premixed with bituminous binder @1.56Kg/Sqm transported to site with VTS, laid over a previously prepared surface, finished to the required grade, level, alignment, and rolling to achieve the desired compaction but excluding prime/tack and Seal coat. For Bitumen of specified grade--USING drum mix type hot mix plant, Paver and Vibratory roller (Over MPM Surface)(VG-30 bulk Grade 60/70)	831	Sqm	124.75	103667.25
14	<b>9 MM SEAL COAT:</b> Providing and laying of Type A 9 mm premix seal coat with HMP of aproprate capacity crushed stone chiping 6.7 mm size and penetration bitumen of specified grade @1.2kg/Sq.m, preparing existing road surface by mechanical means, spreading chips and rolling, by static roller having weight 8 to10 MT etc. complete.(VG-30 bulk bitumen rates are considered to arrive at rates)	832	Sqm	125.8	104665.6

15	Providing & fixing R.C.C.1:2:4 <b>guard stones</b> as per type design including painting numbering fixing in std. Size C. C. 1:4:8 block complete.	75	Nos.	1011	75825
<b>PART II :- CROSS DRAINAGE WORKS</b>					
16	<b>Excavation for foundation in earth</b> , soil of all types, sand, gravel and soft murum, including removing the excavated material upto a distance of 50m. beyond the building area and stacking and spreading as directed, dewatering, preparing the bed for the foundation and necessary backfilling, ramming, watering including shoring and strutting etc.complete.(Lift upto 1.5 m.) By Mechanical Means	22.95	Cum	202	4635.9
17	<b>Excavation for foundation in hard murum</b> including removing the excavated material upto distance of 50 metres beyond the building area and stacking and spreading as directed, dewatering, preparing the bed for the foundation and necessary backfilling, ramming, watering including shoring and strutting etc. complete. (Lift upto 1.50 m) By Mechanical Means	4.95	Cum	222	1098.9
18	<b>Excavation for foundation in hard murum</b> including removing the excavated material upto distance of 50 metres beyond the building area and stacking and spreading as directed, dewatering, preparing the bed for the foundation and necessary backfilling, ramming, watering including shoring and strutting etc. complete. (Lift upto 1.50 m to 3.00 m.) By Mechanical Means	3.3	Cum	423	1395.9

19	Providing and laying Cast in situ/Ready Mix cement concrete in <b>M-10</b> of trap/ granite/ quartzite/ gneiss metal for <b>foundation and bedding</b> including bailing out water, Steel centering, formwork, laying/ pumping, compacting, roughening them if special finishis to be provided, finishing if required and curing complete, with fully automatic microprocessor based PLC with SCADA enabled reversible Drum Type mixer/concrete Batch mix plant (Pan mixer) etc. complete. With fine aggregate (Crushed sand VSI Grade)	3.3	Cum	5688	18770.4
20	Providing <b>uncoursed rubble masonry</b> of trap/ granite/ quartzite/ gneiss stones in cement mortar 1:6 in foundation and plinth of inner walls/ in plinth of external walls including bailing out water manually, striking joints on unexposed faces and watering etc.complete.(Crushed sand VSI Grade)	8.29	Cum	4994	41400.26
21	Providing and fixing in position <b>TMT-FE-500 bar reinforcement</b> of various diameters for R.C.C. pile caps, footings, foundations, slabs, beams columns, canopies, staircase, newels, chajjas, lintels pardis, copings, fins, arches etc.as per detailed designs, drawings and schedules. including cutting, bending, hooking the bars, binding with wires or tack welding and supporting as required complete.	1.26	MT	72000	90720

22	Providing and laying Cast in situ/Ready Mix cement concrete <b>M-25</b> of trap/ granite/ quartzite/ gneiss metal for <b>R.C.C. slabs and landings</b> as per detailed designs and drawings including steel centering, formwork, coverblocks, laying/pumping, compaction finishing the formed surfaces with cement mortar 1:3 of sufficient minimum thickness to give a smooth and even surface or roughening if special finish is to be provided and curing etc.complete, (Excluding reinforcement and structural steel). With fine aggregate (Crushed sand VSI Grade)	5.2	Cum	11363	59087.6
23	Providing <b>cement plaster 20 mm thick</b> in two coats in C.M.1:4 with slurry finish to concrete or brick surface or U.C.R surface in all positions including scaffolding & curing smooth cement slurry finish of 1.5 mm thickness etc. complete as directed.(Crushed sand VSI Grade)	7.78	Sqm	557	4333.46
24	Providing <b>flush grooved pointing</b> with cement mortar 1:3 for brick work including scaffolding and curing etc. complete.	8.8	Sqm	172	1513.6
25	Providing and laying <b>cement concrete pipe</b> of IS 458:2003 NP-2 class of 600 mm diameter in proper line, level and slope including providing and fixing collars in cement mortar 1:2 and curing etc. complete.	10	Rmt	2812	28120
26	Supplying & spreading <b>Hard murum</b> for cushioning of RCC pipe including watering ramming & leveling etc complete.	13.5	Cum	212	2862
27	Providing and casting in situ/ready mix <b>PCC M15</b> grade of trap metal for coping to head walls/ parapet including centering, formwork, compaction and curing etc. complete.(Crushed sand VSI Grade)	2.43	Cum	9276	22540.68

28	Providing <b>earth work in embankment</b> with approved materials obtained from departmental land upto lead of 50 m. including all lifts, laying in layers of 20 cm. to 30 cm. thickness breaking clods, dressing to the required lines, curves, grades & section, watering and compaction with vibratory roller to achieve not less than 97% of standard proctor density etc. complete. (Material obtained from departmental Land)	10	Cum	212	2120
29	Providing <b>earthwork in embankment</b> with approved materials obtained from other sources upto lead of 50 m. including all lifts, laying in layers of 20 cm. to 30 cm. thickness breaking clods, dressing to the required lines, curves, grades & section, watering and compaction with vibratory roller with V-Sat attachment to achieve not less than 97 % of standard proctor density etc. complete ( Material obtained from Other sources)	581.31	Cum	546	317395.26
30	<b>Conveying materials obtained from road cutting</b> including all lifts, laying in layers of 20 cm to 30cm. breaking clods, dressing to the required lines, curves, grades and section, watering and compacting to not less than 97% of standard Proctor density for a lead of over 50 m. to 300 m. inclusive from the site of excavation to the site of deposition as directed.	10	Cum	186	1860
31	<b>Conveying the materials obtained from excavation</b> including all lifts, laying in layers, breaking clods, dressing to the required lines, curves, grades and section for all leads & lifts from the site of excavation to the site of deposition as directed.	498.6	Cum	230	114678
	<b>Total</b>				<b>1875292.34</b>
	<b>Say</b>				<b>1875292.00</b>

**(Rs. Eighteen Lacs Seventy Five Thousands Two Hundred Ninety Two Only)**

**S.W. V - Royalty charges**

Sr. No.	Description of item	Ext. Quantity	Quantity of Material for Royalty Cu. M									
			Cement in bags		SAND		METAL		MURUM		RUBBLE	
	<b>Sub Work II Internal Road</b>											
6	Providing soling using 80 mm size trap metal in 15 cm. layer including filling voids.	191.13					1.32	252.29				
7	Supplying 80 mm trap stone metal at the road side including conveying & stacking etc.	164.04					1.32	216.53				
8	Supplying 40 mm trap stone metal at the road side including conveying & stacking etc.	109.69					1.32	144.79				
11	Supplying hard murum/ kankar at the road site, including conveying and stacking.	70.63							1.20	84.76		
25	Providing uncoursed rubble masonry of trap / granite / quartzite / gneiss stones in cement	8.29	1.70	14.09		0.00					1.16	9.62
31	Supplying & spreading Hard murum for cushioning of R C C pipe including watering.	13.50							1.20	16.20		
34	Providing earth work in embankment with approved materials obtained from other sources.	581.31							1.20	697.57		
			<b>Total</b>	<b>14.09</b>				<b>613.62</b>		<b>798.53</b>		<b>9.62</b>

### Royalty Charges Recovery Statements

Sr. No.	Particular	Required Qty. in Cum	Royalty	Surcharge	Distt. Mineral Foundation Cess	Total Rate	Amount	
				2%	10%			
1	Sand	0.00	211.95	4.24	21.20	237.38	0.00	
2	METAL Hand broken	613.12	211.95	4.24		216.19	132550.41	
3	Murum	798.53	211.95	4.24		216.19	172634.20	
4	Rubble	9.62	211.95	4.24		216.19	2079.75	
			<b>TOTAL AMOUNT</b>					<b>307264.36</b>
			<b>Say</b>					<b>307264.00</b>

(Rs. Three Lacs Seven Thousands Two Hundred Sixty Four Only.)

## RECAPULATION SHEET

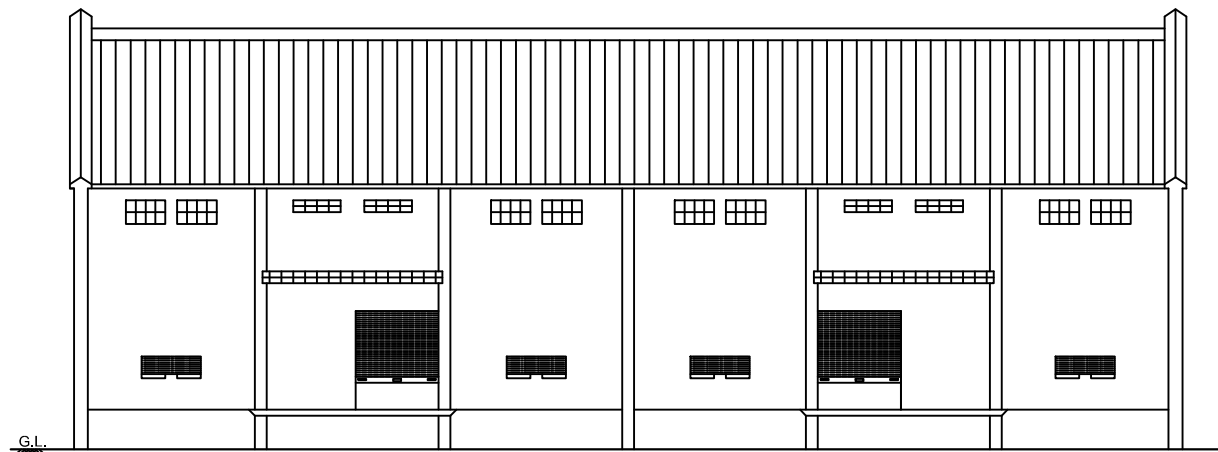
### ESTIMATE FOR CONSTRUCTION OF 1/1080 MT CAPACITY PRE ENGINEERED WH BLDG WITH ANCILLARY WORKS

Based on PWD SSR 2020-21

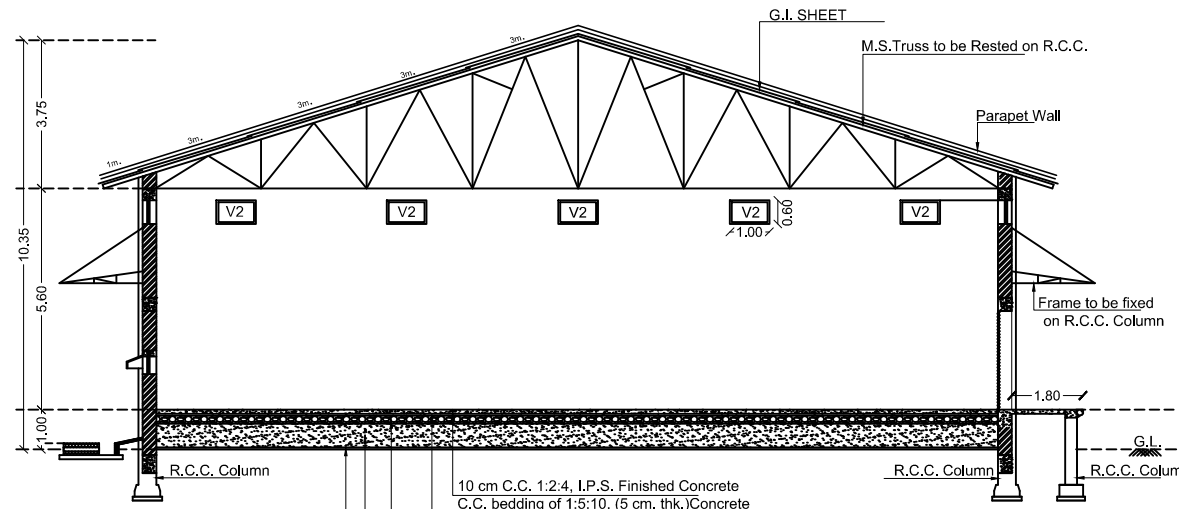
Sr. No.	Particulars	Amount
1	W.H.Building 1/1080M T	7806080.00
2	Internal Bituminous roads	1875292.00
3	Electrification	100820.00
4	Royalty charges	307264
5	Lab testing charges	175000
	<b>Total</b>	<b>10264456.00</b>
	Add 3 % Contigencies	307933.68
	Add 12 % GST	1231734.72
	Add 0.5% Labour Insurance	5132.228
	<b>Net Total Amount</b>	<b>11809256.63</b>
	<b>Say</b>	<b>11809256.00</b>

**(Rs. One Crore Eighteen Lacs Nine Thousands Two Hundred Fifty Six Only)**

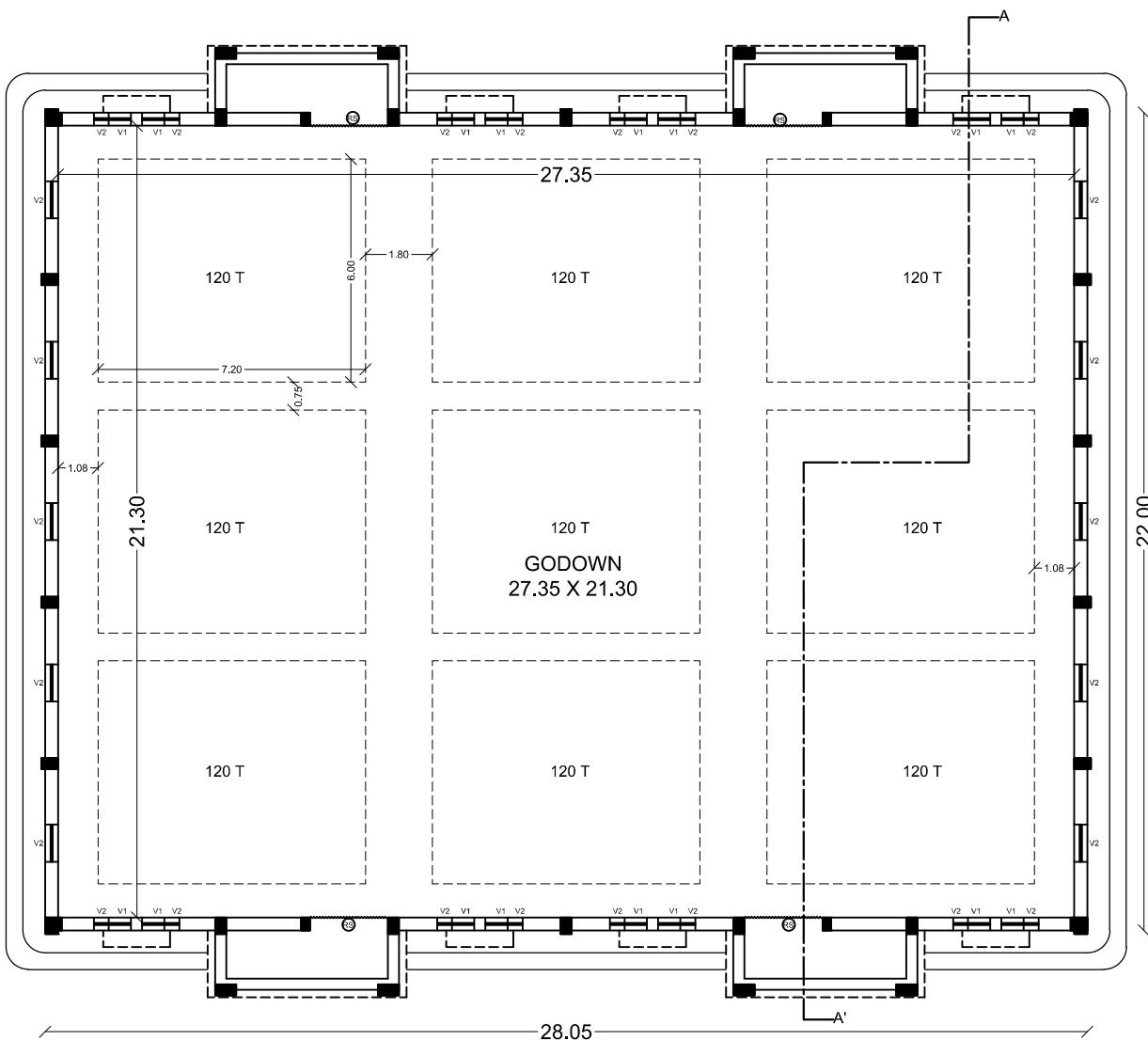
PROPOSED WAREHOUSE BUILDING PLAN BELONGING TO ASGAONKAR AGRO FARMERS PRODUCER CO. LTD. ASGAON, ON GAT NO. 333/2, MOUZA- VIRALI (KHANDAR), TA.- PAUNI, DISTT. BHANDARA.



ELEVATION

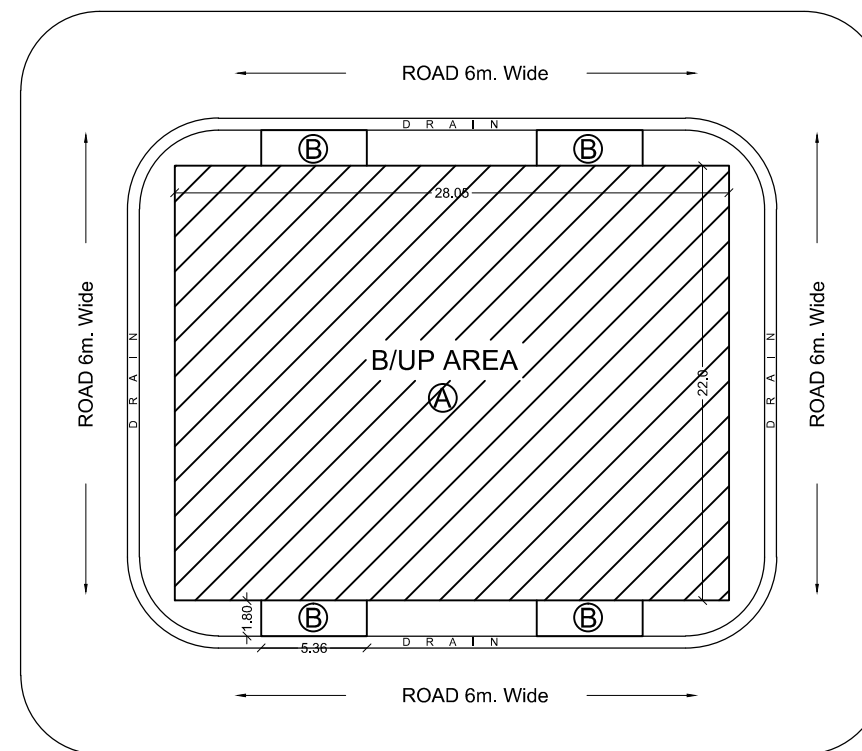


SECTION A-A'



GROUND FLOOR PLAN

SCALE 1: 100



KEY PLAN

SCALE 1: 200

**BUILT UP AREA CALCULATION:**

MAIN BUILDING (A) :  
 28.05m. X 22.0m. = 617.10 Sq.m.  
 PLATFORM (B) :  
 4 X 5.36m. X 1.80m. = 38.59 Sq.m.  
 OFFICE ROOM (C) :  
 6.00m. X 4.50m. = 27.00 Sq.m.  
 LABOUR ROOM (D) :  
 6.00m. X 9.00m. = 54.00 Sq.m.  
 TOTAL BUILT UP AREA = 736.69 Sq.m.

**SCHEDULE FOR OPENING**

TYPE	SIZE	DESCRIPTIONS
RS	2.10X2.50	ROLLING SHUTTER
V1	0.60X0.60	M.S. VENTILATOR FULLY GLAZED
V2	1.00X0.60	M.S. VENTILATOR FULLY GLAZED
V3	1.50X0.45	M.S. VENTILATOR FULLY GLAZED

**AREA STATEMENT:**

PLOT AREA :- 0.40 Ha.  
 Area Under Road :- 831.00 Sq.m.  
 G.F. BUILT UP AREA :- 736.69 Sq.m.  
 TOTAL BUILT UP AREA :- 736.69 Sq.m.

**SANCTION AUTHORITY**

**APPLICANT**

**CONSULTING ENGINEER**

DATE : DRAWN BY: SCALE : 1:100 & 1: 200